



Transition Town Kinsale

Working today for a sustainable tomorrow

Our vision for Kinsale is a resilient, and sustainable town with a thriving local economy

KCEP

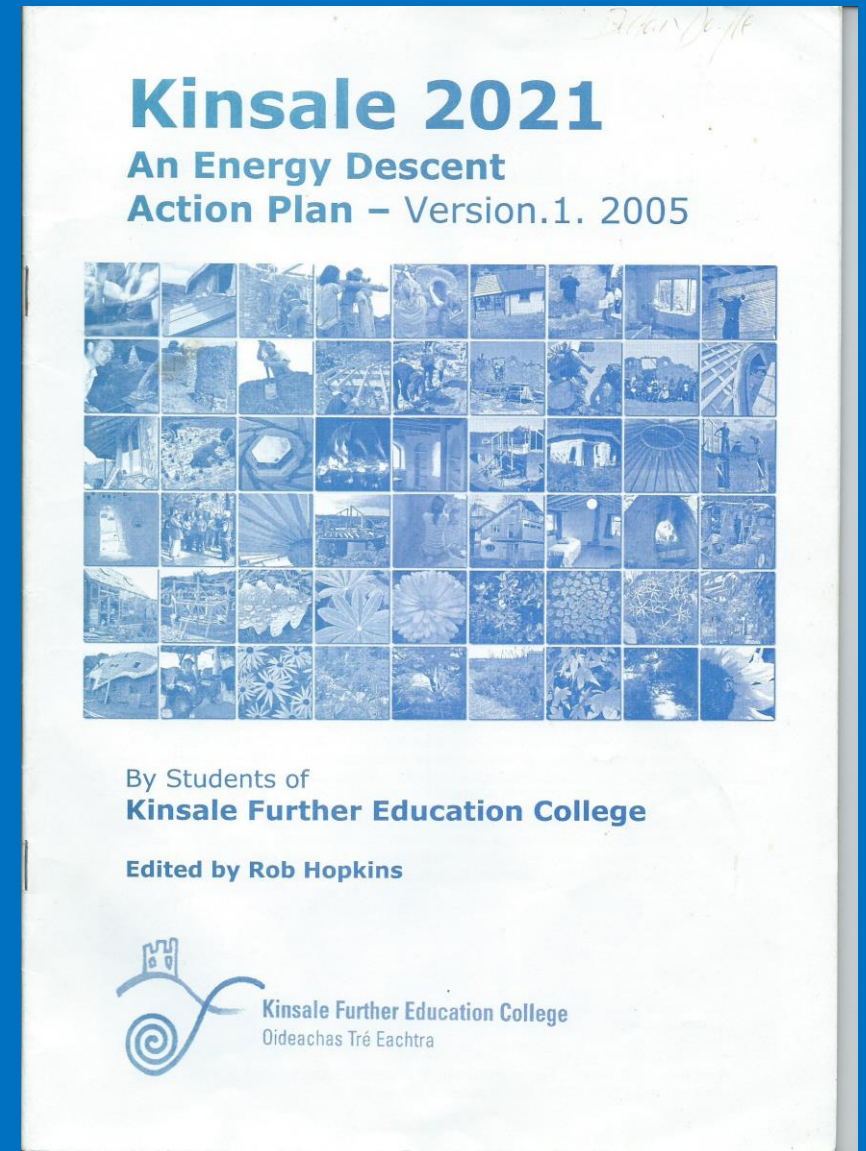
Working towards a carbon-neutral town with energy supplied by renewable sources.

Introduction

Elizabeth Creed



- Kinsale -birthplace of the Global Transition movement (1000+ initiatives world wide)
- *Started out as a student project in Kinsale College.*
- Grant from Kinsale Town Council to newly fledged Transition Town Kinsale
- **Vision under Energy: Kinsale is a carbon-neutral town with energy supplied by a number of renewable sources.**





Energy Forum



Workshops on how to
save energy

KINSALE IS POWERING DOWN!

100 have signed up already
Could you make one change this month?

Check you attic insulation.
18cm thick attic insulation will
reduce your heating bill by 25%



Community Powerdown



Transition Town Kinsale
Working today for a sustainable tomorrow

Public Meeting

Saturday 1st October, 4-6pm
The Temperance Hall, Kinsale

Come and find out about the proposed digester
for the Kinsale area



Manure & food waste in - car fuel & fertiliser out

Feasibility Study for an
anaerobic digester

KCEP

2018 - TTK set up Kinsale Community Energy Project

Future Kinsale Survey

We may not talk in 'zero or low carbon' terms, but **76%** of respondents believe that **Kinsale should be at the forefront of climate action.**

- How could we be more energy efficient?
- Could we power our own town?
- Could we become energy providers?

TTK set up Kinsale Community Energy Project (KCEP) in 2018

And joined the Sustainable Energy Communities network. Initial Meeting with Mentor in January and TTK were invited to present to the network in February.

We have just received grant funding of €20,000 to carry out an **Energy Master Plan**.

Our initial aim would be to achieve energy improvements through the Community Energy Grants Scheme for:

*50 homes *2 public buildings * 2 businesses



KCEP

Phase I

1. Scoping work plan for our Energy Master Plan.
 - To include information required to assist 50 households, 2 local businesses and 2 public buildings to make a bid for funding under the SEAI Community Energy Grant Scheme
2. Creation of Information Pack for the Community Energy Grant Scheme:
 - technology
 - local suppliers
 - potential finance
3. Preparation of application under this Scheme with Project Coordinator
4. Receipt of funding! And implementation
5. Evaluation of implementation

KCEP

Phase II

Promotion of second bid under Community Energy Grant Scheme

Phase III

Community Forum to demonstrate options, and evaluate interest, in the development of community energy generation for Kinsale and hinterland in partnership with investors (e.g. solar, anaerobic digestion, wind).

Development of outline feasibility study for community energy generation to disseminate to community and to potential investors to include:

- technical details
- economic details

Community Energy Generation

Wildpoldsried, a Bavarian village of about 2,600 residents, is leading the way in Germany's extraordinary renewable energy transformation. Over the past 18 years, the village has invested in a holistic range of renewable energy projects that include 4,983 kWp of photovoltaics, five biogas facilities, 11 wind turbines and a hydropower system. As a result, the village has gone beyond energy independence – and it now produces 500% more energy than it needs and profits from sales of the surplus power back to the grid.

Need to consider **Transport** too....

- How we move around
- Where the goods we use come from
- Imagining our town with 'the pedestrian' in mind

Greenhouse gas emission reduction has to underpin our policy decisions; in how we envisage our economic future, in our communities and as a country, but more importantly as a global citizens....

How will we transition?



Why?

- **Green house gas emission reduction- our global commitments through The Paris Agreement 2015**
- **Moral responsibility as global citizens**
- **Energy independence and security**
- **Our health and well-being**
- **Save money!**
- **Make money!**

Kinsale Community Energy Project – KCEP Registration of Interest



Please print in capital letters and tick as appropriate.

By completing this form you are giving K-CEP consent to temporarily store and collate your personal information for the purposes of assessing your eligibility for the SEAI Better Energy Community Grant Scheme. You may request access to, or deletion of, this data at any time.

Name:

Address (inc post code):

Tel: Email:

Is your property (a) business ☐ b) residential ☐ When was it built?

If business, what type of business do you operate?

Do you: (a) own the property ☐ (b) lease the property ☐

If leased, does the owner give you consent to act on their behalf? Yes ☐ No ☐

Is your property? detached ☐ semi detached ☐ terraced ☐ - Block Cavity ☐ Timberframe ☐

single storey ☐ two storey ☐ more ☐ - Trad Stone ☐ Other ☐

What size is the property (approximately)?

For residential properties how many bedrooms do you have?

What type of fuel do you currently use for your heating hot water

How old is the boiler system?

Do you have an existing BER (building energy rating)? Yes ☐ No ☐

If Yes, what is the BER for the property and when was it conducted?

What energy saving upgrades/improvements would you like to carry out and when?

.....
.....

Would you be interested in having your property included in the Energy Master Plan? Yes ☐ No ☐

Would you like to receive regular information about this or other KCEP/TTK projects via our email newsletter? Yes ☐ No ☐

The SEAI Better Energy Community grant scheme only offers part funding for energy upgrades. It would be up to each individual property owner to ensure they have sufficient funds to cover any remaining balance. Grants are only allocated upon successful completion of works and must be verified by an up to date BER/Energy Assessment.

Sustainable Energy Communities

Xavier Dubuisson



Transition Town Kinsale





SUSTAINABLE ENERGY COMMUNITIES



Ireland's Transition to a Low Carbon Energy Future

2015-2030



To engage and
empower
Communities

community
Government ensure
programme regulation
transport technologies strategy
consumers economic
support infrastructure local research
supply framework Ireland's
carbon markets more review measures
efficiency fuels sector develop
projects planning
work scheme
national costs
policy sources
natural Ireland future through
citizens security heating
We including building
market renewable
development transition
electricity



Sustainable Energy Communities

A Sustainable Energy Community (SEC) is a community in which everyone works together to develop a sustainable energy system for the benefit of the community.

This is achieved by:

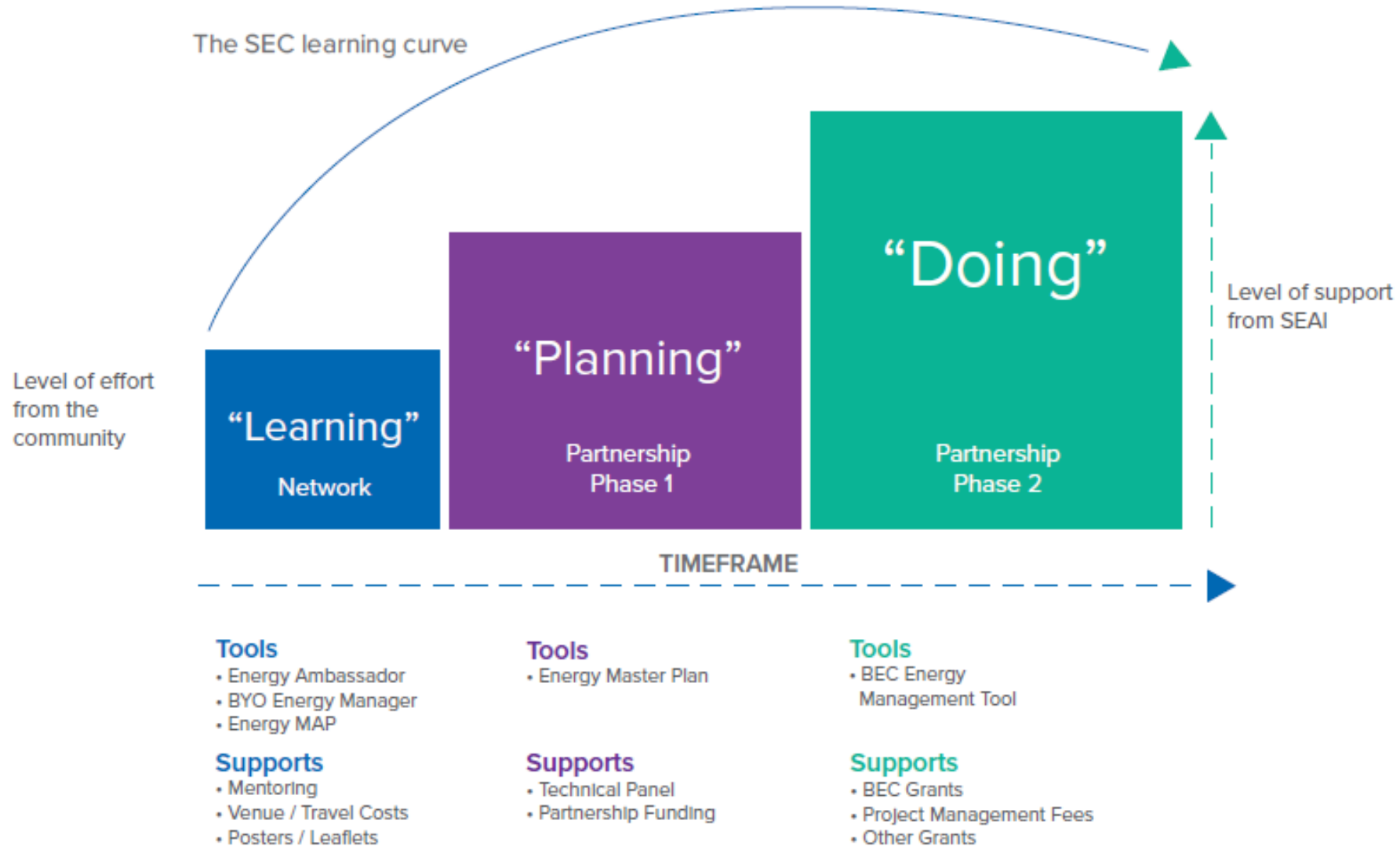
- aiming, as far as possible, to be energy efficient
- using renewable energy where feasible
- Adopt smart technology solutions



SEAI will sign three year partnership agreements to support communities develop sustainable energy communities. SEAI will also provide technical and financial supports to communities.



The SEC Journey



Network Map



>250 SECs nationally
25 in Cork
12 in Kerry



South West SEC Network



- Network gatherings every 2-3 months
- Encourage partnerships and exchange of experience
- Learning opportunities (study tours, thematic workshops, etc.)

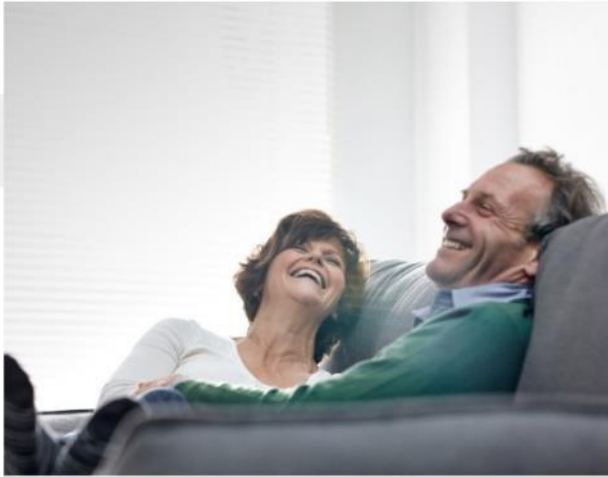


SECs in Action



SEAI Grant Programmes





Grants for your home

Make your home more comfortable and lower your energy bills with our home energy grants.



Grants for business

Manage your energy and reduce costs with support and grants from SEAI.



Electric Vehicle Grants

Switching to driving an EV is more affordable thanks to our grants.



Community Energy Grants



Research Funding

SEAI's Home Energy Grants



Insulation Grant

A home can lose over 30% of its heat through poorly insulated walls. Grants include cavity, internal and external wall insulation, along with attic insulation grants.

Attic & cavity wall: €400
Drylining: €1,600-2,400
External: €2,750-6,000



Heat Pump System Grant

An attractive alternative to fossil fuel heating systems, transforming home comfort levels, offering lower costs and reduced carbon emissions.

Air/Ground/Water:
€3,500



Heating Controls Grant

Reduce your energy usage by up to 20% and save costs with home heating controls.

€700



Solar Water Heating Grant

Solar thermal systems are designed to meet 50-60% of your overall hot water requirement over the year, thereby saving you money on your annual hot water heating bills.

€1,200



Solar Electricity Grant

We are delighted to offer homeowners a grant of up to €3,800 to support the installation of solar panels for electricity generation and battery energy storage systems.

Solar PV: €700/kWp (max 2 kWp)
Battery: €1000



How to apply

Once you have looked at our range of grants, you may wish to talk to a good building contractor, architect, BER Assessor or energy advisor. See everything you need to do to apply.

<https://www.seai.ie/grants/home-energy-grants/>

Paybacks!!



Payback Calculator for Domestic Solar PV

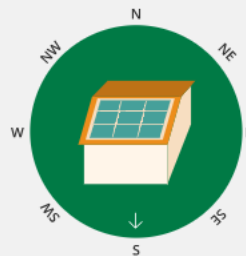
Fill in the questions below to find out how much you can save by installing solar panels for electricity and when you will have a return on your investment

1. Where do you live? ?

Cork

2. In what direction will your solar panels face? ?

1 side: South



3. Roughly what is the 'unit price' which you pay for your daytime electricity? ?

20c per unit

Don't know

>20.0c per unit

4. If you have already spoken to an installer, what is the peak generation capacity of your solar PV system in kilowatts (kW)? ?

2 kW

5. If you have already received a quote from an installer for your solar PV system please enter the amount here (total cost excluding the SEAI grant but including VAT) ?

€ 3800

6. During weekday daylight hours, how much of the time is there someone at home? ?

Someone at home half of the day

ESTIMATED ANNUAL SAVINGS

€335/year

ESTIMATED PAYBACK PERIOD

7 Years

Note that the figures presented here are estimates only - the savings and payback period for solar PV systems can vary considerably. [View all assumptions.](#)

If you want to examine the calculations behind these estimates figures you can [download the full excel version of the calculator here.](#)

SEAI's Warmer Homes Scheme



100% granted

Eligible households (owner occupiers, house built before 2006), in receipt of:

- Fuel Allowance
- Job Seekers Allowance
- Working Family Payment
- One-Parent Family Payment
- Domiciliary Care Allowance
- Carers Allowance

Measures include:

- Cavity wall insulation
- Attic insulation
- Internal or external wall insulation
- Secondary measures: lighting, lagging jackets, draught proofing
- Occasionally: full heating system upgrade, window replacement

Electrical Vehicle Grants

- Grant:
 - Private purchase: €5,000
 - Business purchase: €3,800
- VRT relief
- Lowest motor tax rate: €120/year
- No BIK



Why drive an electric vehicle?

74%

reduction in transport costs compared to a comparable new diesel engine car

SEAI Community Energy Grant 2019

By bringing together groups of buildings under the same retrofit programme, communities projects **facilitate community-wide energy improvements more efficiently and cost effectively** than might otherwise be possible.

Better Energy Communities

Case Study: South Dublin Co. Council



2015 Project Snapshot

LEAD APPLICANT
Retrofit Energy Ireland Ltd, REIL, Paddy Sweeney

PROJECT CO-ORDINATOR
Retrofit Energy Ireland Ltd, REIL, Ken Gallagher

PROJECT
Retrofit of 79 houses and 4 community buildings across South Dublin. The installation of smart meters in 10 households and most of the community facilities as part of the extension of the 'Smart Grid Micro Cluster' project.

FINAL PROJECT COST
€591,148

BEC GRANT
€265,912.20

PROJECTED ENERGY SAVINGS
25%

Administered by
seai SUSTAINABLE ENERGY AUTHORITY OF IRELAND

Better Energy Communities

Case Study: Energy Communities Tipperary



2015 Project Snapshot

LEAD APPLICANT
Energy Communities Tipperary Co-operative

PROJECT CO-ORDINATOR
Marcella Maher-Keogh MEM-BER

PROJECT
Retrofit of 135 homes and 3 community buildings across eight communities in North Tipperary

FINAL PROJECT COST
€2,021,757

BEC GRANT
€1,426,413

ENERGY SAVINGS
1,191,980 kWh

Administered by
seai SUSTAINABLE ENERGY AUTHORITY OF IRELAND

Better Energy Communities

Case Study: Sustainable Clonakilty



2015 Project Snapshot

LEAD APPLICANT
NCE Insulation

PROJECT CO-ORDINATOR
Brian McSwiney, Sustainable Clonakilty

PROJECT
Installation of a rural community bicycle scheme, retrofit of three private sector buildings and the rugby clubhouse in Clonakilty, Co Cork

FINAL PROJECT COST
€318,623

BEC GRANT
€79,234

ENERGY SAVINGS
996,376 kWh

Administered by
seai SUSTAINABLE ENERGY AUTHORITY OF IRELAND

Background

The driving force behind this project was Sustainable Clonakilty, a group of community activists that first came together in December 2006 with a mission to support the transition of the west Cork town of Clonakilty to a low-carbon future and deliver a sustainable living and working environment for the existing community and generations to come. Sustainable Clonakilty is made up of a number of volunteer-led working groups including the 'Events and Promotions' group which organises bi-monthly meetings on diverse subjects around sustainability, organises promotions such as St. Patrick's Day float, and a Green Energy Fair. In November 2008, the group became a company limited by guarantee and a registered charity in order to facilitate funding requirements and establish a professional identity.

Their journey to the 2015 BEC project involved establishing [Clonakilty 2020](#) - a strategy-focused initiative which aims to 'enable the transition of Clonakilty and the surrounding areas to energy neutrality through renewable energy, in order to support a sustainable economy and equality of life for the community by 2020'. With financial support from the Clonakilty Chamber of Commerce (using a Fálte Ireland prize fund) and Cork County Council Local Agenda 21 funds they were able to carry out an energy audit of the town and produce an up-to-date energy map to inform the project. In 2010, they received approximately €27,000 support from the West Cork Development Partnership under the Rural Development Plan 2007-2013 to develop their work with a renewable energy study: 'A Roadmap to Energy Neutrality in the Clonakilty District by 2020'. This

involved employing a specialist to carry out an assessment of the feasibility of using local renewable resources to supply energy within the local area. It confirmed the overall feasibility of the project and outlined the steps to achieve their energy neutral objectives. In 2015, Sustainable Clonakilty recognised the opportunity provided by SEA's BEC scheme to leverage local investment in energy efficiency and renewable energy to contribute towards its mission. Early in the year they began to gather details of potential energy efficiency projects, contacting potential collaborators by email and ultimately joining forces with other key stakeholders in the town to build a community-wide project. Sustainable Clonakilty volunteers also began attending networking events organised by local interest group Energy Cork - a cluster of organisations in the private and public sector in Cork city and county - whose members have been very supportive of the project by facilitating the participation of energy suppliers and providing advice and technical support. Through this organisation, the group met John O'Leary of NCE Insulation, who undertook the role of Lead Applicant for the BEC grant application. Based in North Cork, NCE Insulations is a social enterprise and one of the largest community based installers of energy efficiency measures in the region and were therefore an ideal partner for Sustainable Clonakilty to facilitate delivery of the project.

Using existing networks, such as Tidy Towns and the GAA, as well as local and social media, Sustainable Clonakilty began to build interest in the project and specifically focused on local energy-intensive businesses

Ambitions

- **Build on the success** of the previous Communities Energy Grant schemes **to deliver larger and more technically challenging schemes.**
- **Develop community skills** to manage capital projects and **empower communities to lead small to medium scale projects** in their own communities.
- Support the SEC network members in advance on their **Learn-Plan-Do** process **and disseminate the benefits of energy projects to the wider community.**



SEAI Community Energy Grant

Types of projects funded:

- Community benefits
- Mix of solutions
- A clear road map
- Innovation
- Project ambition
- Justified energy savings
- An ability to deliver the project

Funding levels (up to):

- Residential:
 - Private, fuel poor: 80%
 - Private, non-fuel poor: 35%
 - Local authority: 35%
 - Housing association: 50%
 - Deep retrofit (A3): +15%
- Non-Residential:
 - Not-for-profit/community: 50%
 - Public/Private: 30%
 - Public exemplar: 50%



1850 927 000



Q&A Discussion

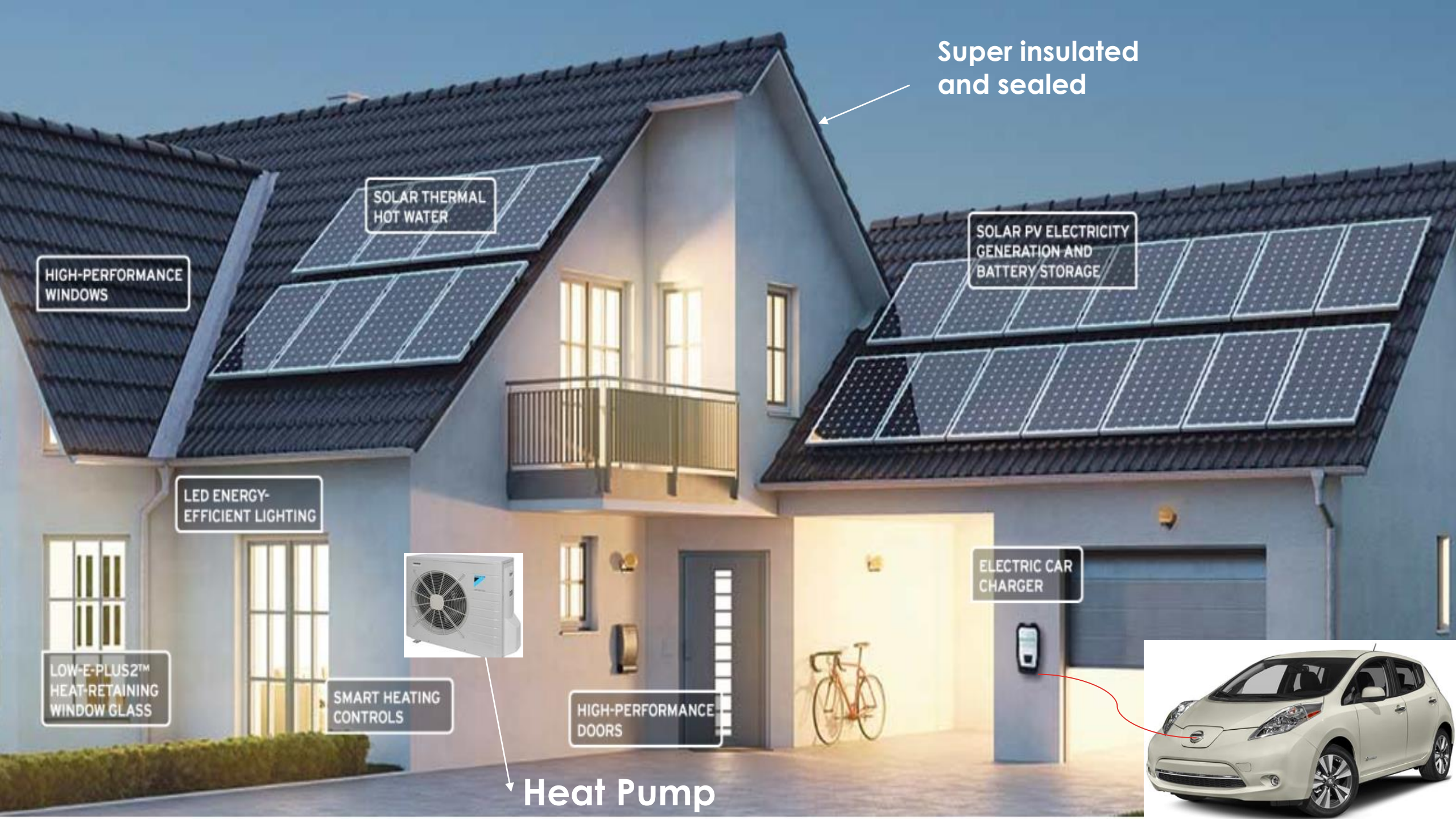


Closing Comments

Donal Chambers







Super insulated
and sealed

SOLAR THERMAL
HOT WATER

SOLAR PV ELECTRICITY
GENERATION AND
BATTERY STORAGE

HIGH-PERFORMANCE
WINDOWS

LED ENERGY-
EFFICIENT LIGHTING

LOW-E-PLUS2™
HEAT-RETAINING
WINDOW GLASS

SMART HEATING
CONTROLS

HIGH-PERFORMANCE
DOORS

ELECTRIC CAR
CHARGER

Heat Pump



Thank you for attending



END

Kinsale Green Week



Date	Time	Location	Event
Thursday 7 th March	7.30pm	Friary Centre, Kinsale	Launch at Kinsale Community Energy Project Information Evening
Sunday 17th March	3.00pm	Kinsale Town Centre	Think Green - St Patrick's Day Parade Look out for Shamrock Planters around town provided by Kinsale Men's Shed
Tuesday 19 th March	12.45pm	Kinsale College Kinsale Green Campus	Mark Boyle - A conversation about his new book living without electricity. <i>(Moneyless Man)</i>
Wednesday 20 th March	12.45pm	Kinsale College Kinsale Green Campus	Dr Tara Shine <i>Environmental scientist, Director of Change by Degrees and Co-Founder of Plastic Free Kinsale</i>
	7.30pm	Friary Centre, Kinsale	A talk on her recent expedition to Antarctica with Homeward Bound, the global leadership programme for women in science
Thursday 21 st March	12.45pm	Kinsale College Kinsale Green Campus	Zero Waste Workshop with Olivia Ormston and Margaret Thuillier <i>Zero Waste Kinsale, Transition Town Kinsale</i>
Friday 22 nd March	12.45pm	Kinsale Community School	Zero Waste Workshop with Olivia Ormston and Margaret Thuillier
Sunday 24th March	2.00pm -4.00pm	Sáile, Kinsale	Community Meitheal with Music <i>Kinsale College, Transition Town Kinsale, Kinsale Men's Shed</i>
			Local national schools will also be visiting the garden at Kinsale College
<div>     </div>			



KINSALE
YOUR TASTE OF IRELAND



Making it Local

Saile
KINSALE
SPORTS & COMMUNITY
CENTRE



**Ringrone
Allotments**

**Kinsale
Farmers'
Market**



Transition Town Kinsale



KINSALE
IRISH
MEN'S
SHEDS
ASSOCIATION



**Kinsale
Environmental
Watch**

**Kinsale
Flower &
Garden Club**



Kinsale College
Coláiste Chionn tSáile



**EDUCATION
FOR SUSTAINABILITY**
INSPIRING CARE FOR THE EARTH



We support the

SUSTAINABLE DEVELOPMENT GOALS

